

Service Line  
服务热线 /400-826-1112

西子电梯科技有限公司  
XIZI ELEVATOR CO., LTD.

- 地址/中国·杭州市临安经济开发区科技大道2329号
- Add/NO.2329 Science and Technology Av.,  
Lin'an Economic Development Zone, Hangzhou, China
- Http://www.xizilift.com

本书为一般信息出版物,我们保留随时更改产品技术和说明的权利。  
样本内容仅供参考,实际以双方合同约定及实物为准。

This book is a publication of general information, and we reserve the right to alter the techniques and specifications of the products at any moment.  
Catalog content is for reference only, actual configuration is as per contract and goods in kind prevail.

XZ-1612



**XIZI** 西子电梯

**XIZI**  
**西子电梯**

FREIGHT LIFT / CAR LIFT  
**F5000 / F5000-Q**  
— 货梯/汽车梯 —

## FREIGHT LIFT F5000 货梯

货梯的出现给物件搬运带来了极大的便利,载重较大的货梯更能体现其搬运的优势。UN-F5000正是一款拥有1T~5T大载重范围的货梯产品,超大的载重量在节能型的控制系统的调配下亦能实现能源的有效节约。

The appearance of Freight lift has brought great convenience for the transporting, and the Freight lift with a huge capacity could embody its advantage of transporting better. UN-F5000 Freight lift, with a capacity of 1T~5T, could achieve effective energy saving when the huge capacity is matched with a energy saving control system.

### 主要配置 The main configuration

载重范围 Capacity	630-5000kg
速度范围 Speed	0.25~1.0m/s
主机 Machine	有齿轮主机 Geared machine
控制柜 Controller	U-CON
门机 Door operator	永磁变频门机 Permanent magnetic VVVF door operator
操纵箱 Operation panel	U-CF500
门保护 Door protection	光幕 Light curtain



## CAR LIFT F5000-Q 汽车梯

随着经济的发展,人们的生活水平不断的提高,生活质量不断的改善,汽车逐渐走进寻常百姓之家。优耐德开发的UN-F5000-Q汽车电梯,充分利用汽车电梯制造技术,结合国内外市场需求而研发的系列汽车电梯,采用高度成熟的变频变压(VVVF)控制技术精确调速控制,避免了因轿厢受力不均导致曳引系统负载加重而产生噪音及轿厢抖动,最大程度优化了这一独特产品的特性,使您的爱车出入更加安全可靠。UN-F5000-Q汽车梯已成为工厂、仓储、百货商场、物业中心等单位的理想选择。

With economic development, people's living standard and the quality of life are unceasingly improving, and the automobile are gradually entering into life of common people. The UN-F5000-Q car lift developed by UNITE using the Car lift manufacturing technology fully, is the Car lift developed for the need of domestic and foreign market by using the highly mature Variable Voltage Variable Frequency (VVVF) control technology for precise speed control, which has avoided the noise and the car vibration produced by the overload of traction system owing to the unevenly stress to the car, so as to optimize its unique product characteristic to the maximum and gives a more safe and reliable guarantee for your loved car. The UN-F5000-Q car lift has become an ideal choice for factory, warehousing, department store, property center and other organizations.

### 主要配置 The main configuration

载重范围 Capacity	3000kg-5000kg
速度范围 Speed	0.25~0.5m/s
主机 Machine	有齿轮主机 Geared machine
控制柜 Controller	U-CON
门机 Door operator	永磁变频门机 Permanent magnetic VVVF door operator
操纵箱 Operation panel	U-CF500
门保护 Door protection	光幕 Light curtain

超强主机  
POWERFUL MOTOR



性能稳定 经久耐用

经过优化的货梯专用主机,提高了电机的稳定性,减少噪音污染,满足用户持久耐用的使用需求。

Stable and reliable performance

The optimized motor of freight elevators, improve the stability of motor, reduce noise pollution, satisfy customers' need of durability.



结构优化 维护便捷

采用了成熟异步电机技术,机械结构稳定可靠,维护方便快捷,使用成本随之降低。

Simple Construction Maintenance Friendly

Adopt the mature technology of asynchronous motor, the mechanical structure is stable and reliable, maintained friendly and quickly, the use-cost is reduced.



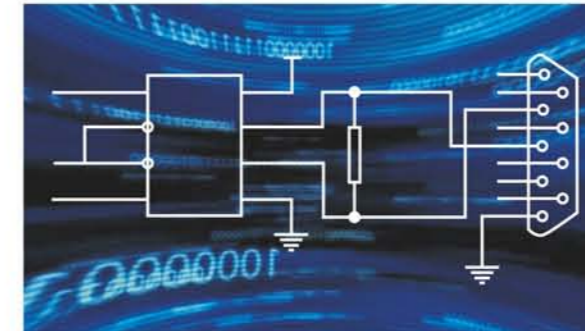
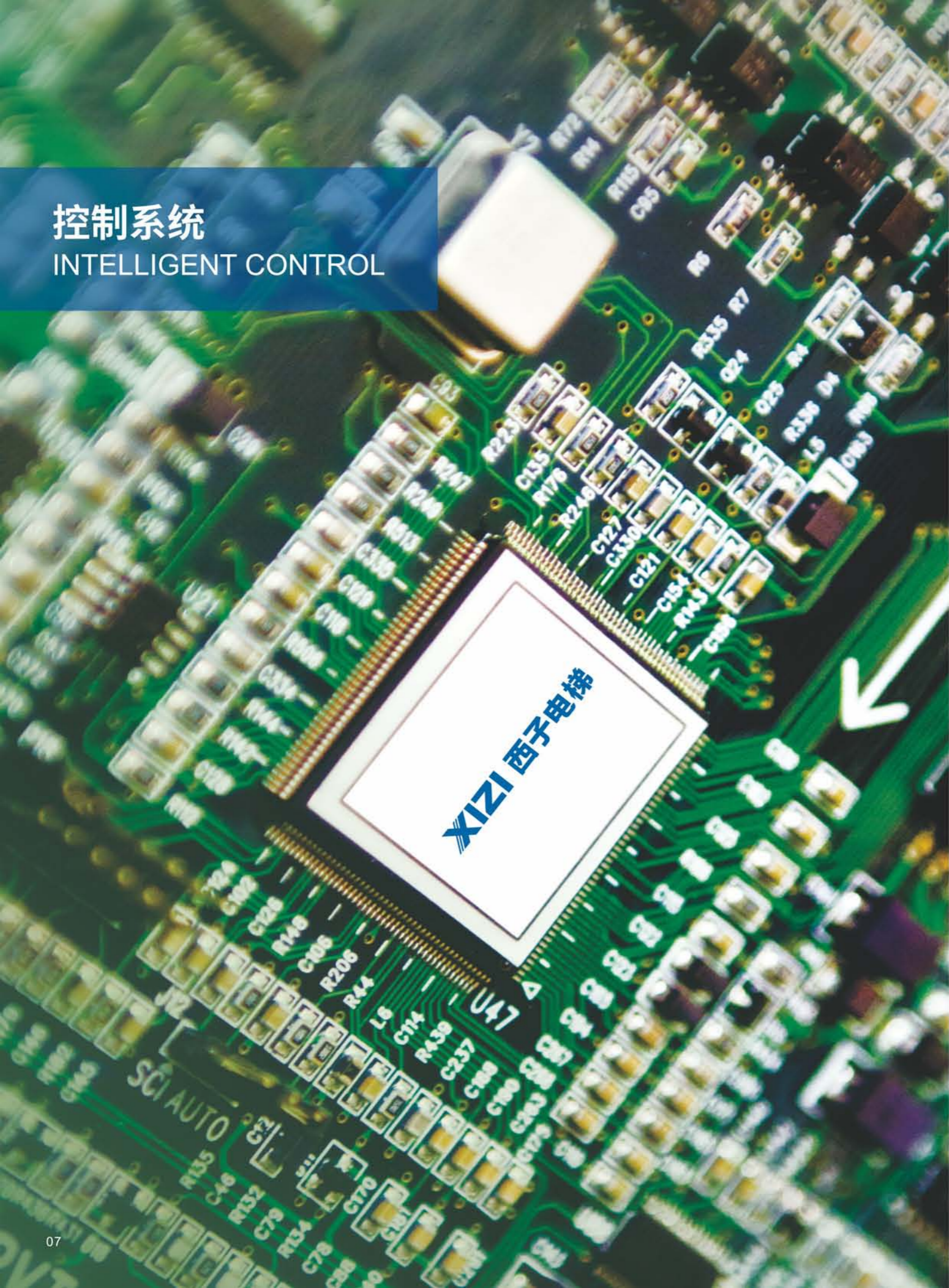
超强运载 创造价值

货梯专用主机具有不同等级的载重规格,方便客户选择,其中最大可载运量达5000kg,为用户高效运输,带来可观收益。

Strongly capacity creat value

The freight elevators' dedicated motor have different grades of Load specifications, it is convenient for the customer to choose. The largest load capacity is 5000 kg. It is efficient to transport and bring considerable revenue.

控制系统  
INTELLIGENT CONTROL

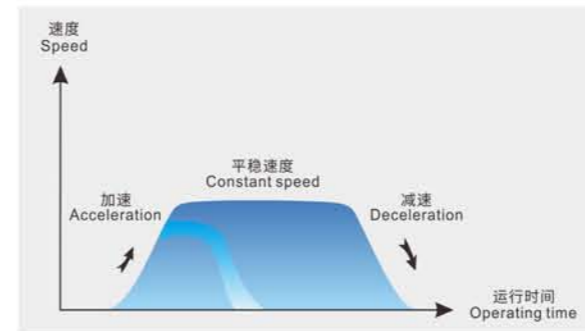


串行通讯系统

采用脉冲传递信号,层站显示和层站召唤仅仅需四根线,大大减少连线故障与制作成本,提高系统可靠性,并方便今后升级改造。

Serial Type Communication System

Adopt the pulse signal,landing display and call only need 4 wires,it will reduce the cost of connection failure and production cost greatly,improve the system reliability,also it will be convenient to upgrade in the future.

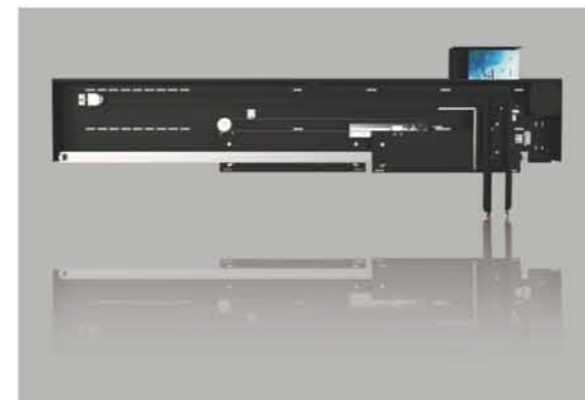


独特图形发生器

使得电梯在加速、减速、制动过程中更加平稳,减少运行振动,提高平层精度,减少运行时间。

The Unique Pattern Generator

Make the elevator become more stable in the process of accelerate、decelerate and braking, reduce the running vibration,improve the leveling accuracy, reduce the time of running.



永磁变频门机

采用业界成熟的变频驱动技术和控制逻辑,同步门刀保证厅轿门开关同步,运行灵敏、安全;结构设计简洁合理,节省空间,方便安装、维修。

Permanent Magnet VVVF Door Operator

Adopt the skilled technology of Variable frequency drive and control logic, the synchronous door knives device to ensure that open and close car doors synchronous operation ,and run sensitively and safely. The physical design is concise and reasonable ,the space is saved ,it is easy to install and repair.

## 安全功能 SAFETY FUNCTION



### 安全可靠、值得信赖

门系统采用光幕门保护技术,光幕数量达到国内领先的154束,在开关电梯门时能有效保护物品的安全,为UNITE的优秀品质增添了一份可靠的保障。高强度的轿厢结构、关键部件的优化设计提升了整体结构的牢固性与安全性,有效保证汽车运输的安全。

#### Safe Reliable, Worth Trusting

The door system uses Infrared curtain door protection technology the beams reached 154, can protect the goods effectively the security during opening, has increased a reliable safeguard to the UNITE quality. The high strength car structure, key component's optimization design has promoted overall construction reliability and security, which effectively guarantees motor transport's security.

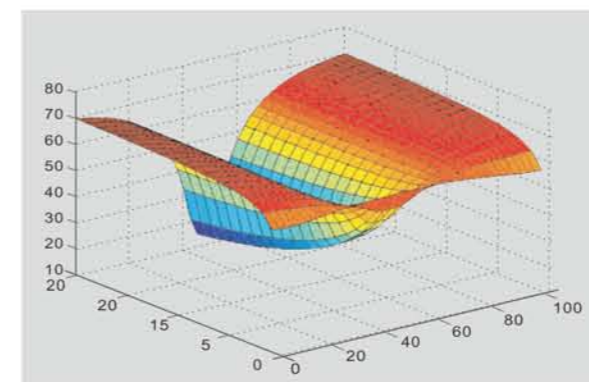


### 微机控制 高效运行

采用了多微机模块化控制系统,五大电脑模块置于数据网络系统。可在不改变硬件配置的前提下现场修改软件,调整系统参数,提高电梯控制系统的升级能力,准确高效的控制电梯所有的驱动和功能。

#### Micro Control, High Efficiency Running

Used the microcomputer modular control system, the five computer module in data network system. Can be under the premise of without changing the hardware configuration field to modify the software, adjust the system parameters, improve the ability of the elevator control system upgrade, accurate and efficient control of the elevator all drive and function.



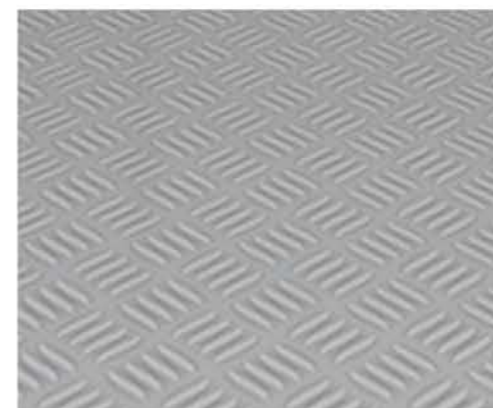
### 性能稳定 平层精确

专用的图形发生器令运行速度曲线平缓圆滑,避免货梯在加减速过程中产生冲击,保障乘客和货物稳定安全;运行效率高,平层精确,使货物搬运方便、安全。

#### Stable Performance, Leveling Accurately

Dedicated graphics generator make run speed curve gently smooth, avoid impact in the process of deceleration and acceleration, ensure the safety of passengers and cargo stability, high efficiency, leveling accurate, goods transportation is convenient, safe.

标准装潢  
STANDARD DECORATION



U-Q0501

吊顶装饰: 钢板喷粉(深幕灰)  
轿壁装饰: 钢板喷粉(深幕灰)  
地板装饰: 花纹钢板

Ceiling: Painting steel(Gray)  
Car panel: Painting steel( Gray)  
Floor: pattern steel

可选轿壁 Car wall



火山灰  
Volcano gray



象牙黄  
Ivory yellow



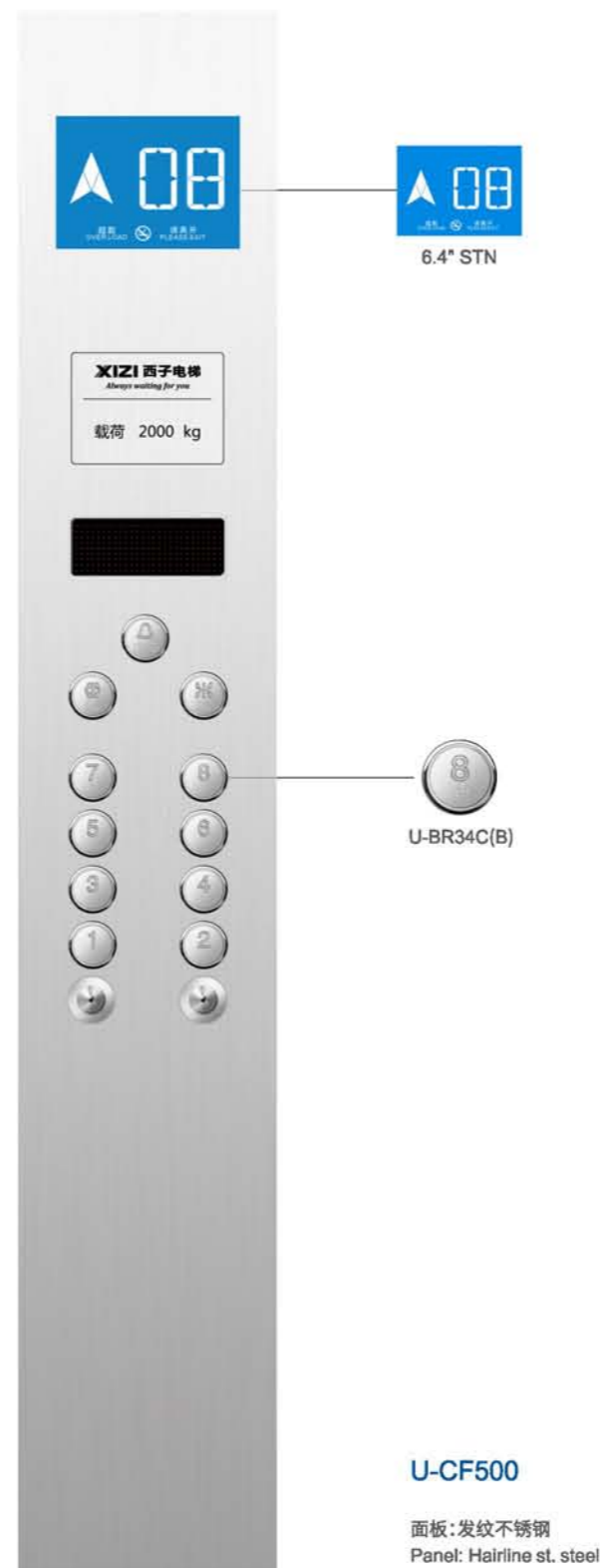
苹果绿  
Apple green

标准配置

STANDARD CONFIGURATION



操纵箱  
COP



召唤盒  
HOP



\* 以上铭牌样式暂仅供参考, 具体以实物为准. \* Above nameplate is for reference only, the specific in kind prevail.

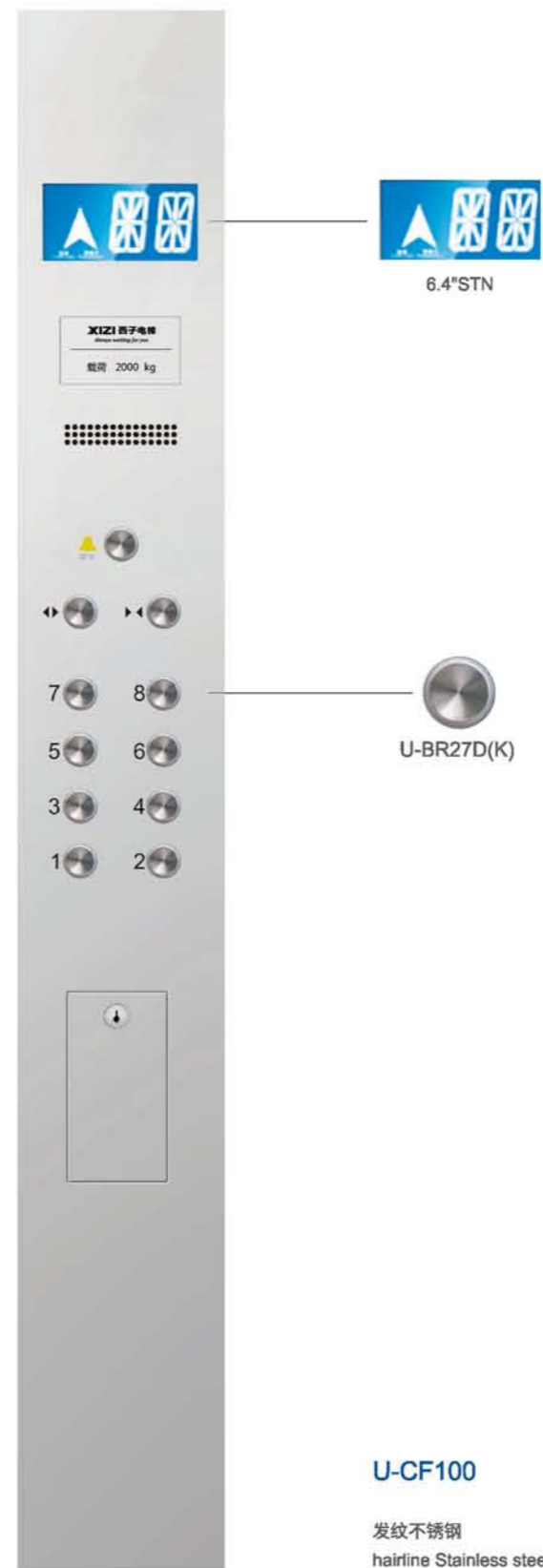


可选配置

OPTIONAL CONFIGURATION



操纵箱  
COP



召唤盒  
HOP



\* 以上铭牌样式暂仅供参考, 具体以实物为准。 \* Above nameplate is for reference only, the specific in kind prevail.

# 整梯功能表

## FUNCTION LIST

### 基本功能 Basic function

全集选	Full collective operation
自动返回基站	Main landing
光幕门保护	Infrared curtain door protection
轿顶检修	Top of car inspection
终端楼层保护	Terminal floor protection
超载保护	Over-load protection
开关门按钮	Door open button / door close button
厅门/轿门时间分别控制	Independent time control of landing door and car door
厅外及轿厢方向指示	Hall / car direction indication
数字式大厅/轿内显示	Hall / car position indicator
四方对讲装置(大于30m时为五方对讲)	4 Sides inter communication device(5 sides when over 30m)
轿厢应急照明	Car emergency light
轿厢警铃	Car alarm bell
满载直驶	Full-load non stop run
轿厢关门延时保护	Delayed car door close protection
修正运行	Correcting run
驱动设备过热保护	Drive motor overheat protection
反向指令自动消除	Calls in opposite direction auto-clear
停梯开关	Parking switch
启动时力矩补偿	Pre-torque output
故障自诊断	Fault self-diagnosis
井道位置自学习	Shaft position self-learning
抱闸反馈检测功能	Brake feedback inspection
接触器反馈检测功能	Contactors feedback inspection
速度反馈检测功能	Velocity feedback inspection
错误指令取消	Cancel error calls
关门等待取消	Door hold cancel
自动泊梯	Auto Parking

### 可选功能 Function options

光电&安全触板双重门保护	Photocell + safety edge door protection
紧急消防操作	Emergency fireman operation (EFO)
紧急消防员操作*	Emergency fireman's service (EFS)*
消防状态提醒显示	Fireman's service light
独立服务	Independent services
司机直驶	Non stop button
开门保持按钮	Door hold button
并联/群控	Duplex control/ group control
小区监控屏*	Area monitor system (AES)*
停电应急疏散装置	Auto rescue device
电梯专用空调*	Elevator air conditioner*
有司机服务	Attendant service operation
定时开关机*	Timing setting*
地震操作*	Earthquake operation*
轿内照明风扇自动控制	Fn and light protection-FLP
机房紧急电动运行	Emergency rescue operation(ERO)
轿厢到站钟	Car chime

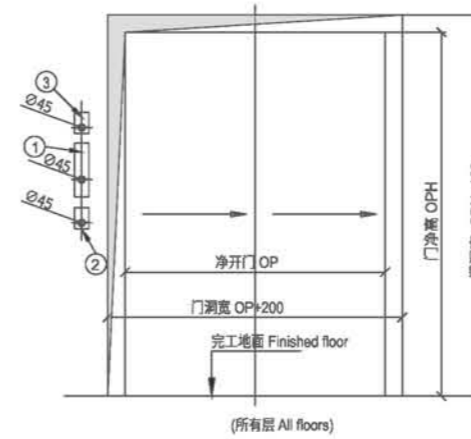
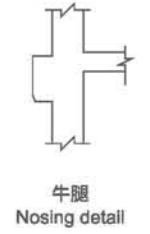
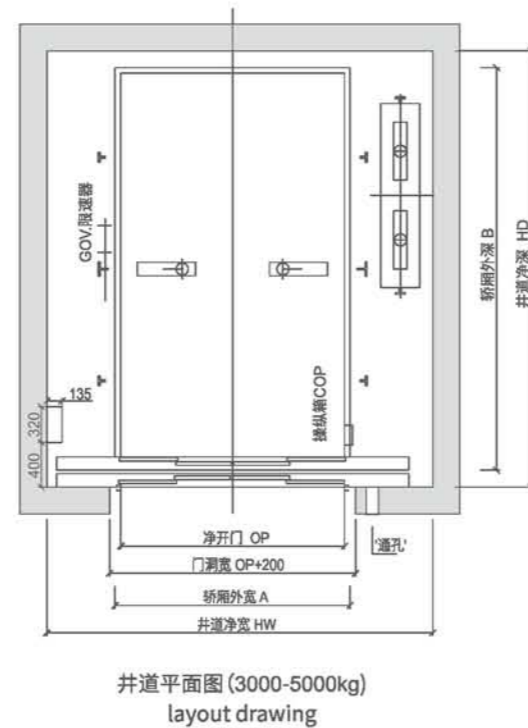
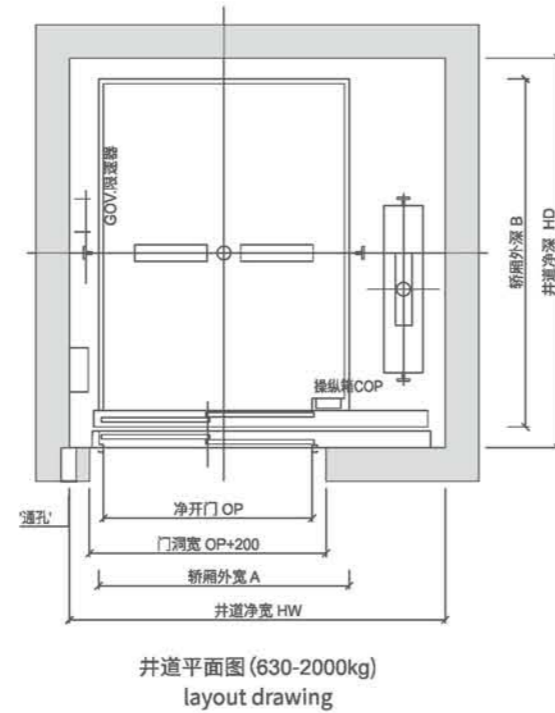
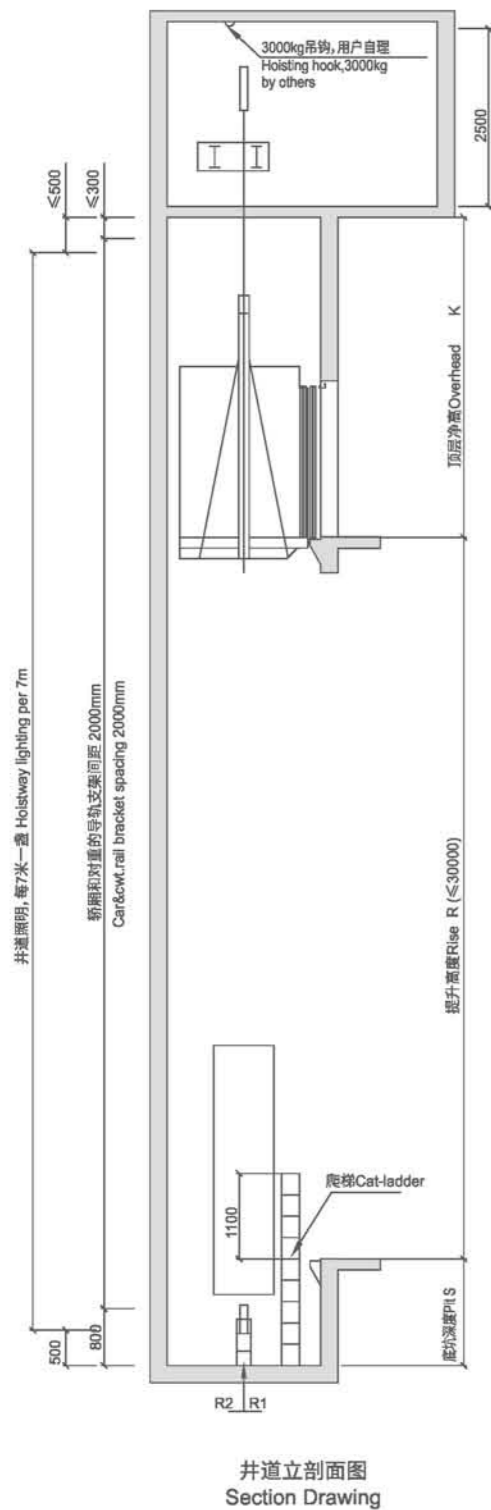
注意: 1. 以上功能适用于速度为0.25 ~ 1.0m/s 的货梯产品。

2. 后面加有“\*”的选项, 均需要向工厂进行确认后方可决定是否向用户提供。

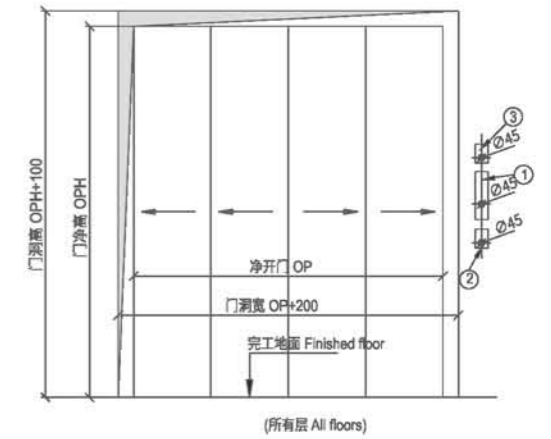
Notice: 1. Above functions are only applicable for freight lift with speed: 0.25 ~ 1.0m/s.

2. The option with "\*" need to confirm with the factory first.

# UN-F5000 货梯土建图 LAYOUT OF FREIGHT LIFT



- 1: 按钮和显示
  - 2: 基站盒、仅基站设置
  - 3: 消防开关 (如有消防功能), 仅基站设置
- 建议用户采用内径45MM PVC管预留走线穿孔  
Suggest to use 45mm PVC tube for wire reservation



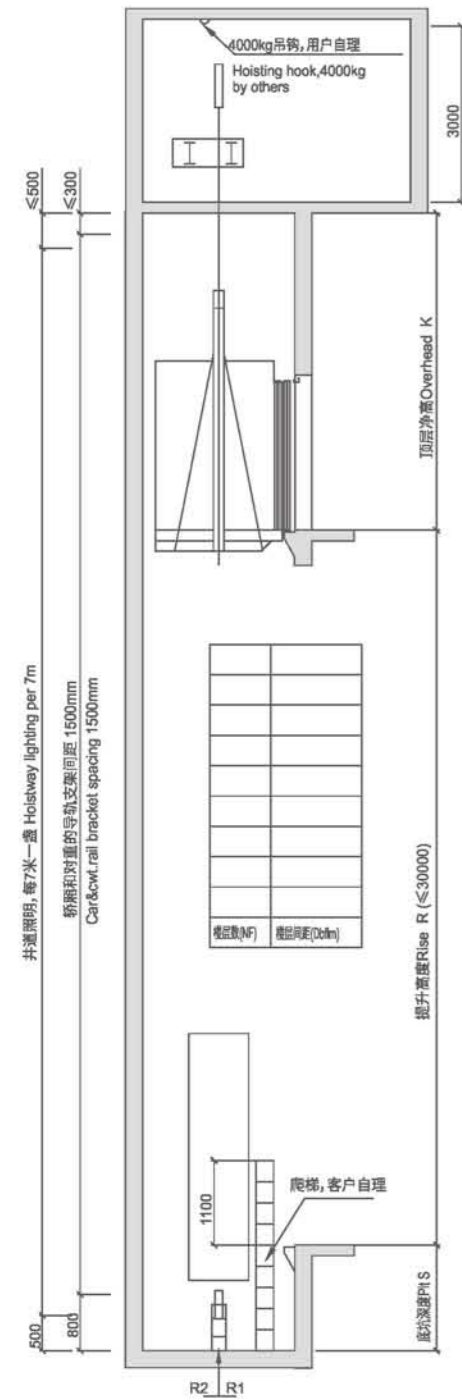
- 1: 按钮和显示
  - 2: 基站盒、仅基站设置
  - 3: 消防开关 (如有消防功能), 仅基站设置
- 建议用户采用内径45MM PVC管预留走线穿孔  
Suggest to use 45mm PVC tube for wire reservation

载重 (kg) Capacity	速度 (m/s) Speed	轿厢外尺寸 (mm) Cabin outer size 宽 (A) × 深 (B)	开门净尺寸 (mm) Opening clear size 宽 (OP) × 高 (OPH)	井道净尺寸 (mm) Shaft clear size 宽 (HW) × 深 (HD)	最小底坑深度 Min. pit depth S (mm)	最小顶层净高 Min. overhead K (mm)
630	0.5	1300×1500	1100×2100(旁开双折)	2150×1800	1500	4500
	0.63					
	1					
1000	0.5	1500×1800	1100×2100(旁开双折)	2350×2100	1500	4500
	0.63					
	1					
2000	0.5	1800×2500	1500×2100(旁开双折)	2700×2800	1500	4500
	0.63					
	1					
3000	0.5	2100×2800	2000×2100(中分双折)	3450×3100	1500	4650
	1					
4000	0.25	2100×3600	2000×2400(中分双折)	3450×3900	1500	4650
	0.5					
5000	0.25	2500×3600	2400×2400(中分双折)	3950×3900	1500	4650
	0.5					

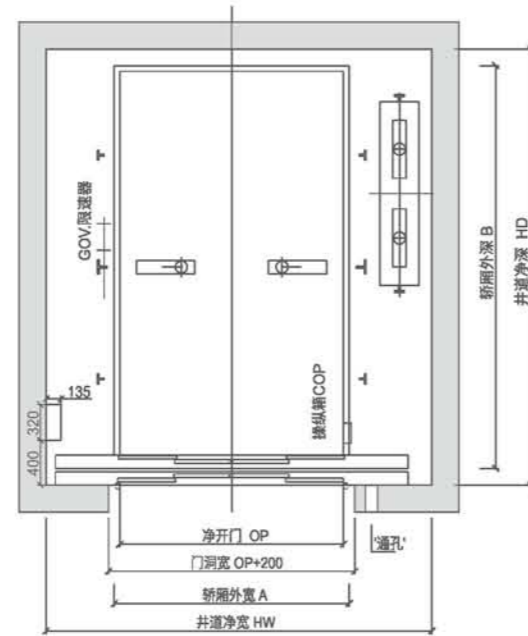
以上示例图仅供参考 Note: The above drawing is for reference sample

# UN-F5000-Q 汽车梯土建图 LAYOUT OF FREIGHT LIFT

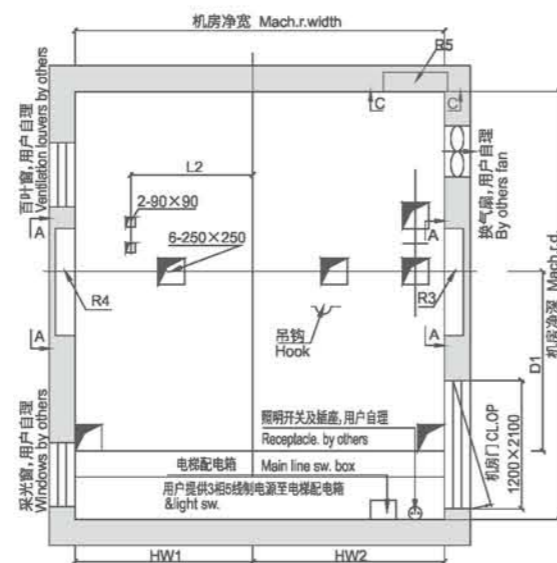
载重:3000kg  
Loading capacity: 3000kg



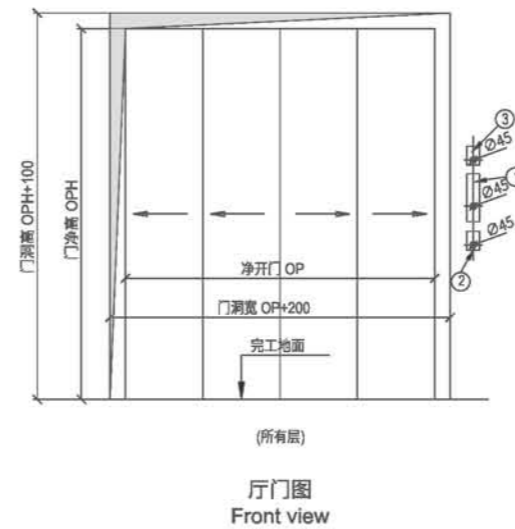
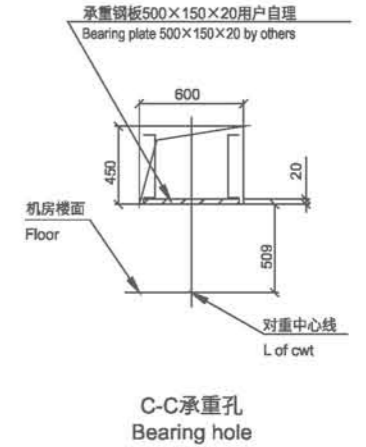
井道立剖面图  
Section Drawing



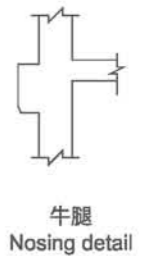
井道平面图(单通门)  
layout drawing (single opening)



机房留孔图  
Cutouts of machine room



- 1: 按钮和显示  
2: 基站盒、仅基站设置  
3: 消防开关(如有消防功能), 仅基站设置  
建议用户采用内径45MM PVC管预留走线留孔
1. Button and displ  
2. LOP only for base floor  
3. Fire switch(if have EFS), only for base floor  
Suggest to use 45mm PVC tube for wire reservation



载重 (kg) Capacity	速度 (m/s) Speed	轿厢外尺寸 (mm) Cabin outer size 宽 (A) × 深 (B)	开门净尺寸 (mm) Opening clear size 宽 (OP) × 高 (OPH)	井道净尺寸 (mm) Shaft clear size 宽 (HW) × 深 (HD)	最小底坑深度 Min. pit depth S (mm)	最小顶层净高 Min. overhead K (mm)
3000	0.25	2600×6000	2400×2400	4000×6360	1500	4800
	0.5					
5000	0.25	3500×6000	2600×2400	4560×6360	1500	4800
	0.5					

以上示例图仅供参考 Note: The above drawing is for reference sample